


**THE PARTNERSHIP FOR ASSESSMENT OF READINESS
FOR COLLEGE AND CAREERS [PARCC]**

ACCESS AND EQUITY FOR ENGLISH LANGUAGE LEARNERS

**Diane August
H. Gary Cook**

CREATE Conference, October 19, 2012

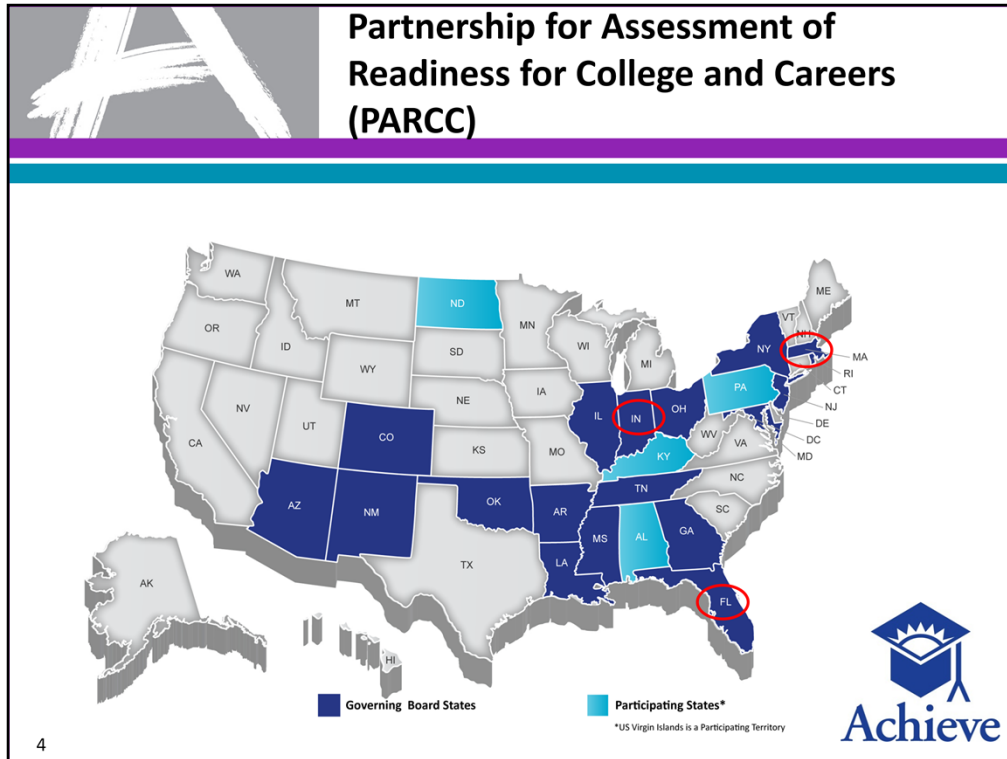



Overview

- **Background on PARCC**
- **Access and Equity**
- **Resources**

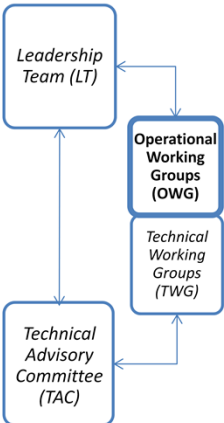
2

Background on PARCC






Accessibility, Accommodations, and Fairness (AAF) Operational Working Group



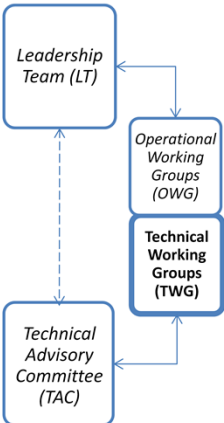
```

graph TD
    LT[Leadership Team (LT)] <--> OWG[Operational Working Groups (OWG)]
    OWG <--> TWG[Technical Working Groups (TWG)]
    TWG <--> TAC[Technical Advisory Committee (TAC)]
    LT <--> TAC
            
```

- **Who:** Comprised of state representatives, Achieve staff members, and eventually vendor representatives
- **What:** Responsible for the day-to-day aspects of work of key components of work
- **Why:** To ensure efficient and effective collaboration among PARCC members to meet PARCC goals.
- **Expertise:** State representatives include those with expertise in instructional strategies and assessment development for SWDs and ELLs.




Accessibility, Accommodations, and Fairness Technical Working Group



```

graph TD
    LT[Leadership Team (LT)]
    OWG[Operational Working Groups (OWG)]
    TWG[Technical Working Groups (TWG)]
    TAC[Technical Advisory Committee (TAC)]
    LT --> OWG
    OWG --> TWG
    TAC -.-> LT
    TAC --> TWG
            
```


- Committee members are **national experts** who represent a range of expertise in accessibility and accommodations [SWDs, English Language Learners, and equity]
- Experts provide guidance to the operational working group on technical issues related to designing accessible assessments that remain true to the intended constructs, and providing accessible implementation tools
- White papers developed by the national experts will be posted to parconline.org when finalized



AAF Technical Working Group Focused on ELLs

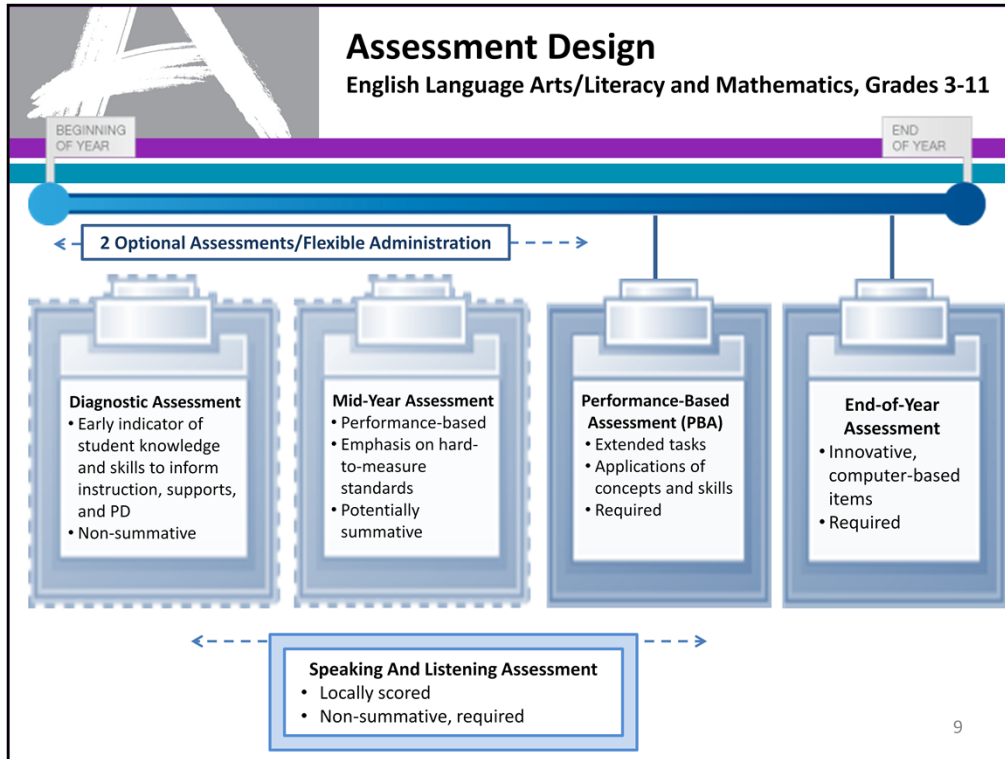
AAF TWG Member	Affiliation
Diane August	Center for Applied Linguistics
H. Gary Cook	University of Wisconsin-Madison
Dave Edyburn	University of Wisconsin-Milwaukee
Claudia Flores	University of North Carolina – Charlotte
Kenji Hakuta	Stanford University
Dianne Piche	Leadership Conference on Civil Rights
Alba Ortiz	The University of Texas at Austin
Charlene Rivera	George Washington University
Diane Spence	Region 4 Education Service Center, Braille Services
Martha Thurlow	National Center on Educational Outcomes
Daniel Wiener*	Massachusetts Department of Elementary and Secondary Education

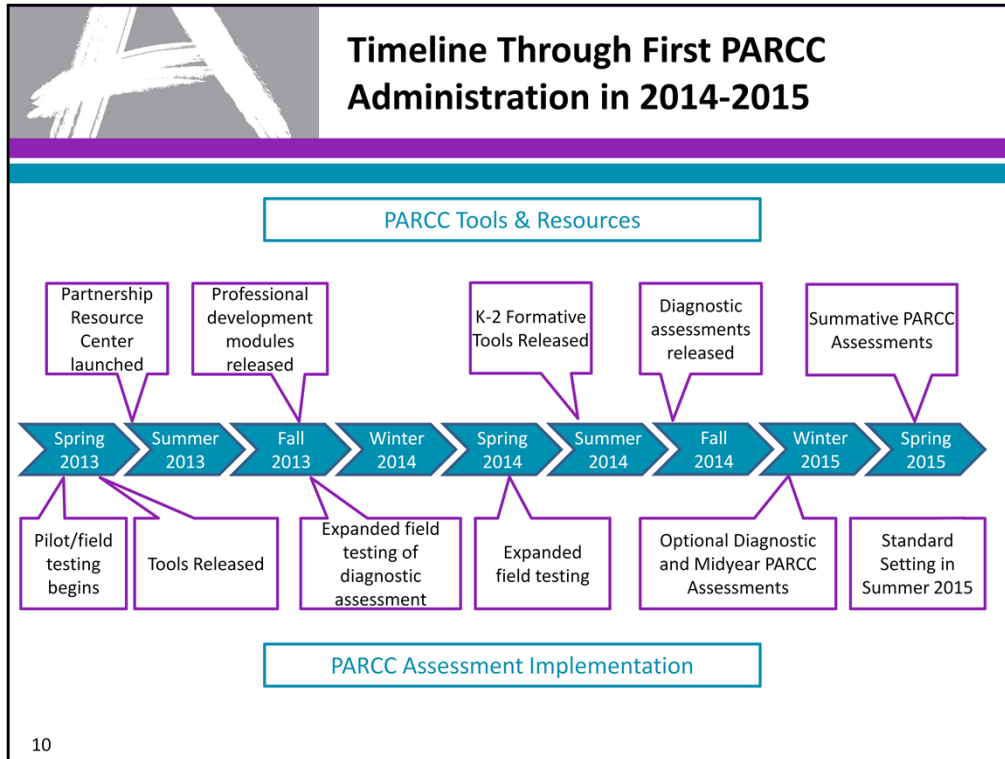
7 *Chair of the AAF TWG and liaison to the AAF OWG




PARCC Assessment Priorities


1. Determine whether students are college- and career-ready or on track
2. Compare performance across states and internationally
3. Assess the full range of the Common Core Standards, including standards that are difficult to measure
4. Measure the full range of student performance, including the performance of high and low performing students
5. Provide data during the academic year to inform instruction, interventions and professional development
6. Provide data for accountability, including measures of growth
7. Incorporate innovative approaches throughout the system








**Access and Equity for
English Language Learners [ELL]**






Promoting Student Access


PARCC is committed to the following principles:

- Use **Universal Design principles** to create accessible assessments throughout every stage and component of the assessment
- Minimize/eliminate features of the assessment that are irrelevant to what is being measured, so that all students can more **accurately demonstrate their knowledge and skills**
- Measure the **full range** of complexity of the standards
- Use **technology** to make all components of the assessment as accessible as possible



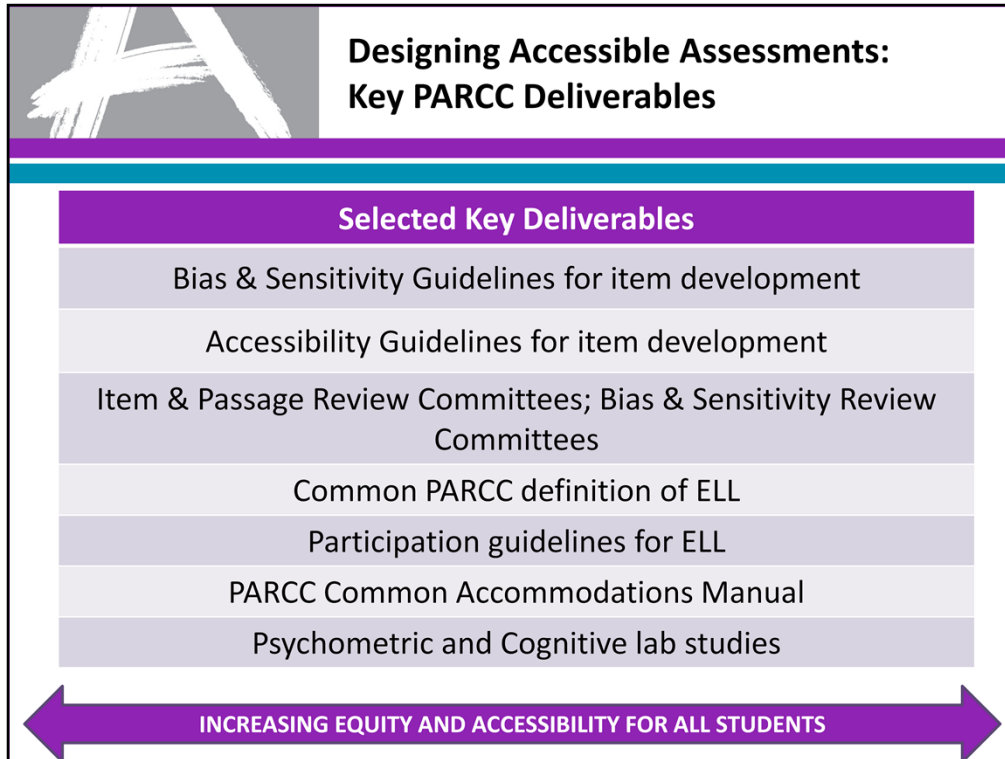
Use of Technology


- Technology-Enhanced Items**
 - Present assessment material and capture student responses in a way that cannot be accomplished with paper and pencil
 - Ex.: simulation, interactivity, drag-and-drop
- Electronic Item Banking**
 - Adherence to recognized technology standards will allow for supports and accessibility information to be embedded in digital test items
- Student Access & Engagement**
 - Electronically tagged items will allow for proper supports to activate for individual students, promoting access for students with disabilities and ELs.
 - Technology-enhanced items may include interactive elements




Embedded Supports

- **Screen readers text-to-speech/speech-to-text software**
- Change font size/graphic enlargement
- Choice of background/text color
- Highlight critical features
- Passage/item/response choice
- **Graphic organizers or representations**
- **Customized dictionary or other home language supports/tools**
- **Embedded/pop-up glossary**
- Reducing visual distractions surrounding written text
- Avatars (personalized for speaking or sign language)
- **Captions for audio**
- Option response: adapted keyboards, StickyKeys, MouseKeys, FilterKeys
- **Customized timing**
- Braille printing and refreshable Braille



		
<hr/>		
<hr/>		
<p>Resources</p>		
<hr/>		



Additional Questions?

Sign up for newsletter & updates:
www.parcconline.org

View of prototype items in ELA and Mathematics:
<http://www.parcconline.org/samples/item-task-prototypes>

Contacts:

Lani Dunthorn, Associate Director, PARCC Assessment Development:
ldunthorn@achieve.org

Danielle Griswold, Program Associate, Instructional Supports & Educator Engagement: dgriswold@achieve.org

Jeff Nellhaus, Director, PARCC Assessment Development: jnellhaus@achieve.org

17