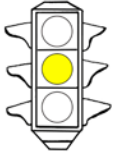


Detours



ROOT



ROOT

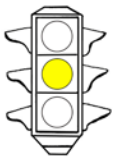
We call the main part of a word the root.

Some roots are words all by themselves, but most are not—they need a prefix in front, or a suffix that comes after them.

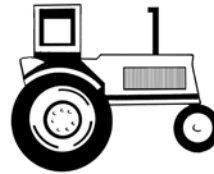
Detours



ROOT



The root -TRACT-



-tract- is a Latin root that means "to pull or drag."
A tractor is often used to pull farm machinery or heavy loads.

Directions: Use your yellow marker to underline the root in these words. Then match the words with the pictures that show what they mean. How does "pull" make sense in these words?

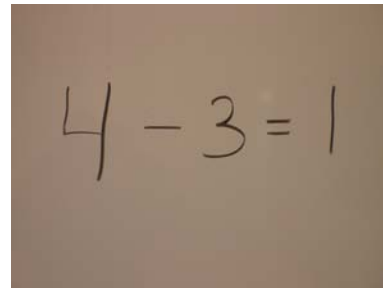
1. _____attraction

a.



2. _____distracted

b.



3. _____extract

c.



4. _____subtraction

d.

