



*At the debate, Jose argued that students should have **representation** at school board meetings.*

representation



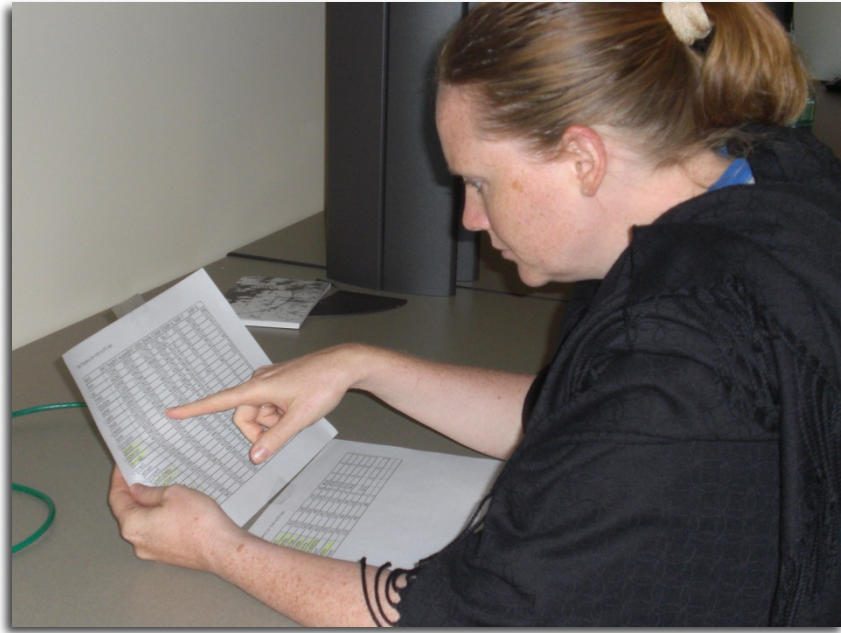
*Peter and Julia had very different **perspectives** on how to complete their assignment.*

perspective



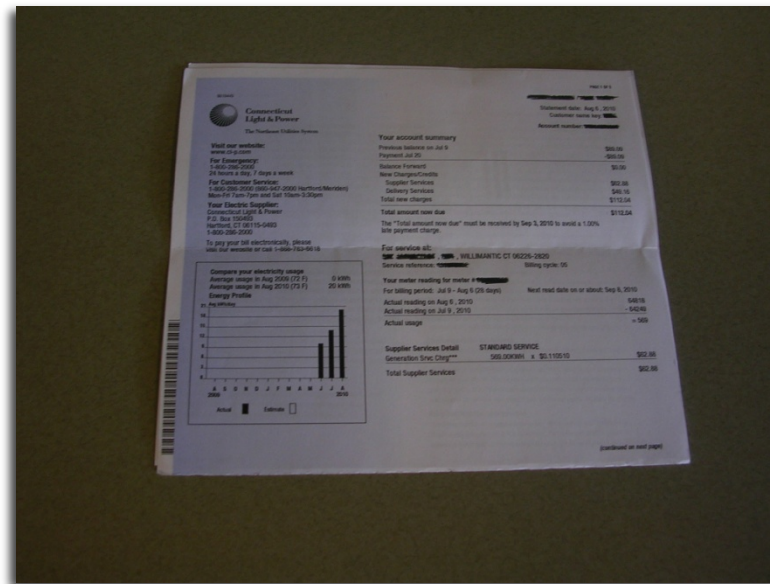
*It is **critical** to have the right amount of charcoal when barbequing.*

critical



*The researcher **analyzed** the results of the test.*

analyze



*The woman didn't know how to **interpret** the electric bill so the company manager explained it to her.*

interpret



*Having a brown belt in karate is a **prerequisite** for working towards a black belt.*

prerequisite



*Weather **affects** what we wear. In cold weather, we have to wear coats and gloves.*

affect



*The **function** of a stove is to cook food.*

function



*When Annette saw her daughter playing video games, she told her to do something more **constructive** such helping with dinner.*

constructive



*The **mandated** recycling program included plastic, paper, glass, and metal, and resulted in a lot less trash for the town.*

mandated